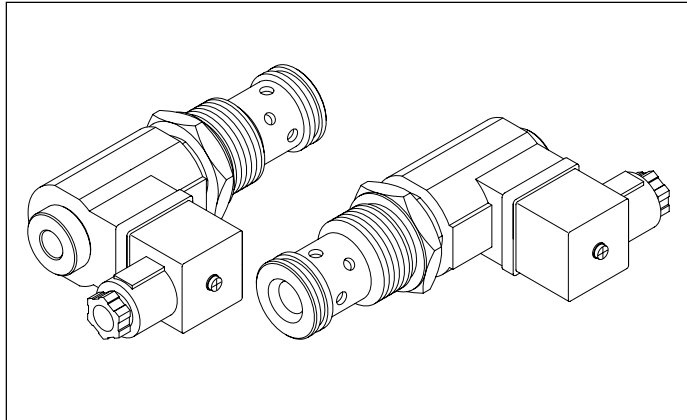
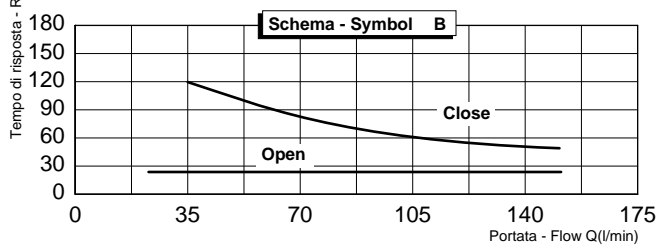
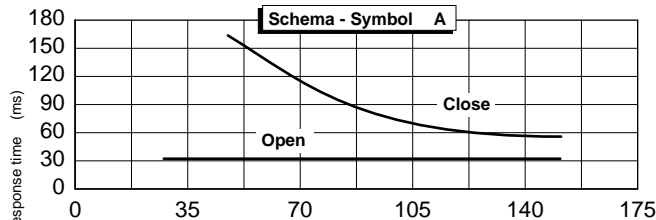
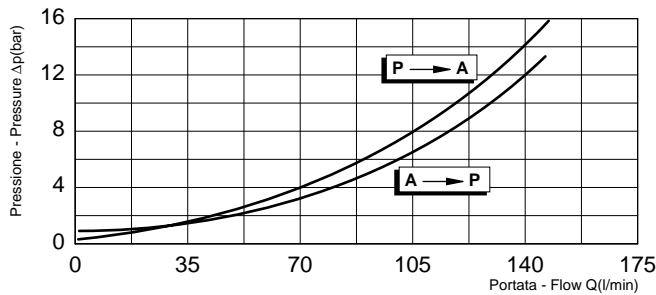


Valvola elettrica 2 vie unidirezionale pilotata - a cartuccia
Two ways pilot operated electric valve - cartridge style
mod. EV150 - C

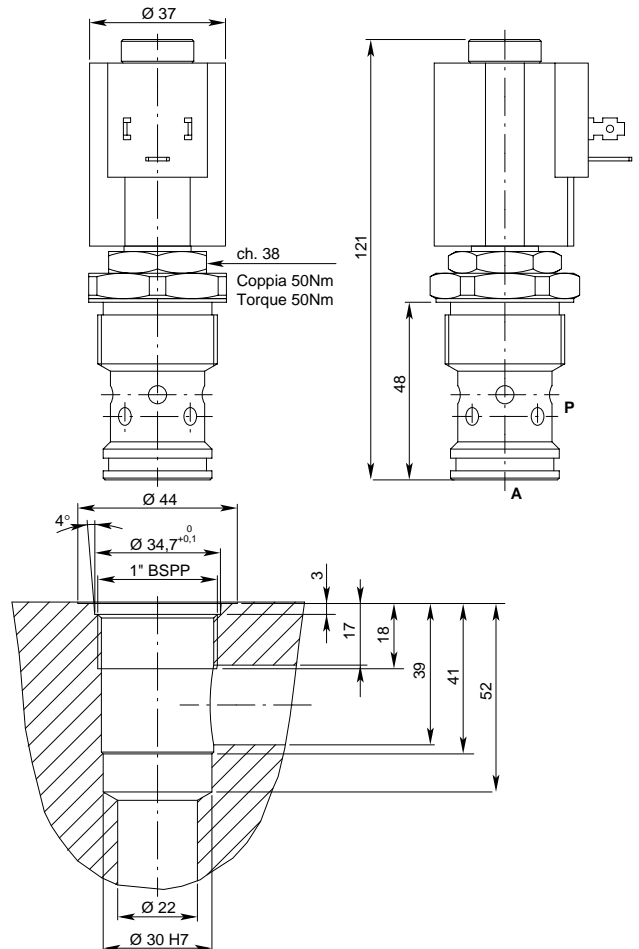


Cod.	Schema Symbol	Funzioni possibili con solenoide: Operating features with solenoid:	
		diseccitato de-energized	eccitato energized
A		P → A A → P	P → A A → P
B		P → A A → P	P → A A → P
M		P → A A → P	P → A A → P

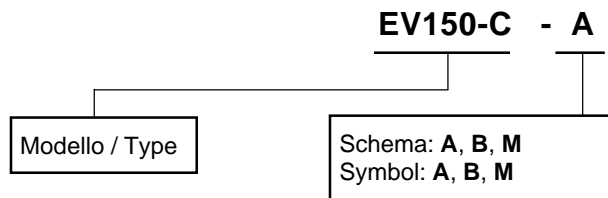


Modello EV150-C Type EV150-C	Pressione massima Max pressure bar	Portata max Max flow l / min
Schema - Symbol A	300	150
Schema - Symbol B		
Schema - Symbol M		

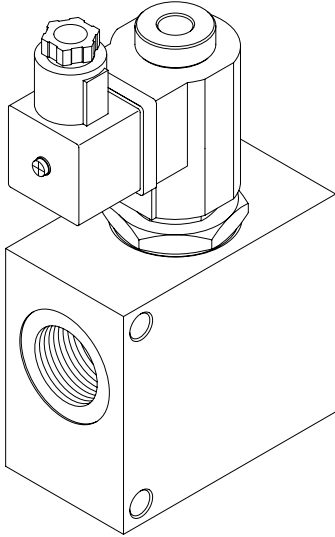
Tutti i dati forniti sono stati ottenuti usando olio con viscosità di circa 30 cSt a 50 °C. Campo di temperatura ammesso: -20 °C, +90 °C. Filtrazione assoluta: 25µ.
 I dati non sono impegnativi, CBF si riserva di apportare modifiche senza preavviso.
 All performances and calibrations are carried out by using hydraulic oil with viscosity approx. 30 cSt at 50 °C. Temperature range: -20 °C, +90 °C. Filtration absolute: 25µ.
 The specifications are not binding, CBF reserves the right to introduce modifications without notice.



Sigla di ordinazione / Ordering code

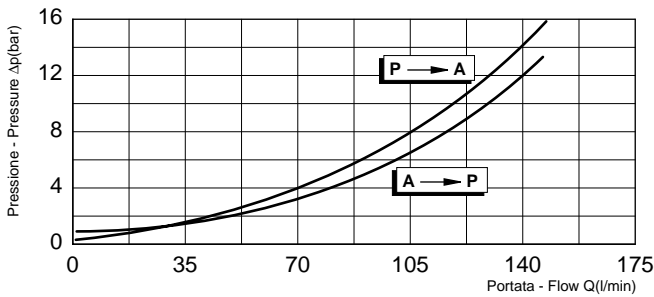


Valvola elettrica 2 vie unidirezionale pilotata con o senza vite di emergenza
Two ways pilot operated electric valve with or without emergency screw
mod. EV150 / EV150VE

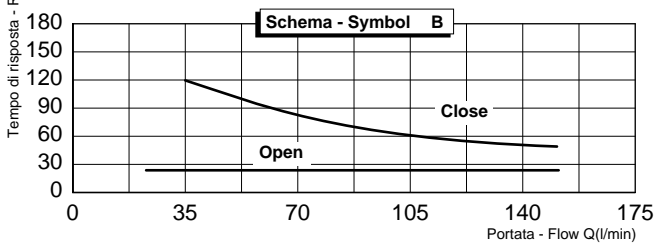
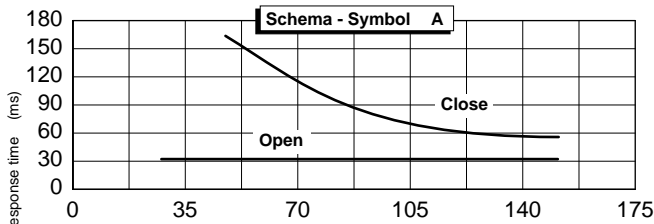


Cod.	Schema Symbol	Funzioni possibili con solenoide: Operating features with solenoid:	
		diseccitato de-energized	eccitato energized
A		P → A A → P	P → A A → P
B		P → A A → P	P → A A → P

Schema idraulico / Hydraulic scheme

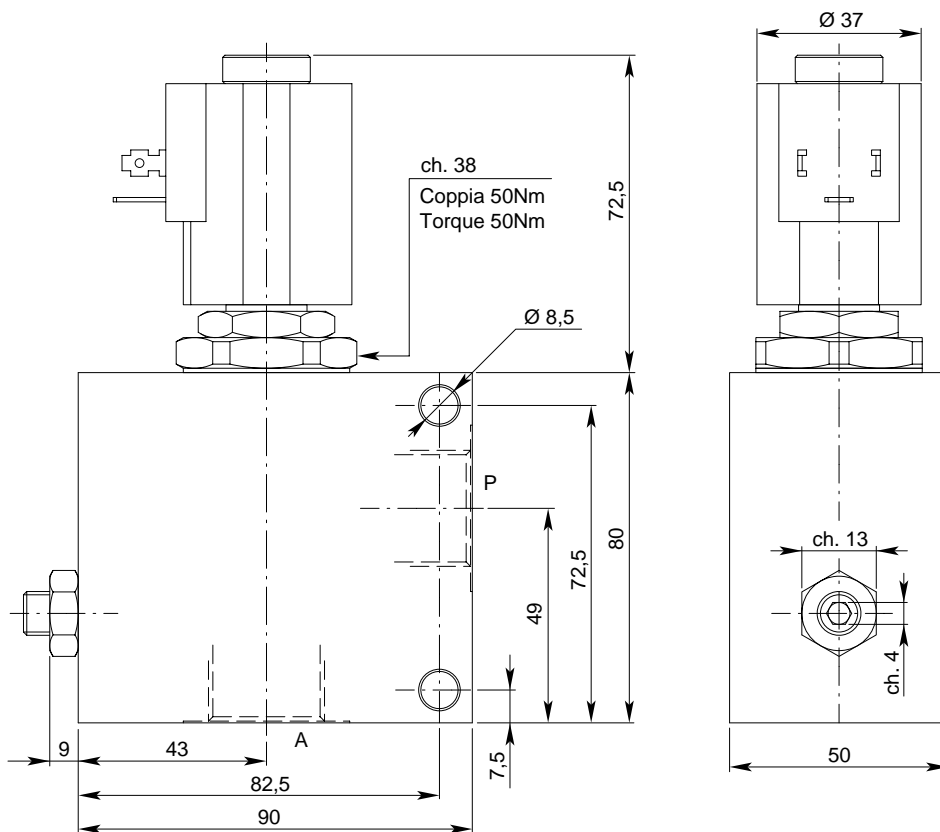


Tutti i dati forniti sono stati ottenuti usando olio con viscosità di circa 30 cSt a 50 °C. Campo di temperatura ammesso: -20 °C, +90 °C. Filtrazione assoluta: 25µ.
 All performances and calibrations are carried out by using hydraulic oil with viscosity approx. 30 cSt at 50 °C. Temperature range: -20 °C, +90 °C. Filtration absolute: 25µ.



Modello Type	P A	Pressione massima Max pressure bar	Portata max Max flow l / min
EV150 - 34 / EV150 - 34 - VE	3/4" gas	300	150
EV150 - 10 / EV150 - 10 - VE	1" gas		

Disegni / Drawings



Sigla di ordinazione / Ordering code

EV150 - 34 - B - VE

Modello / Type

I dati non sono impegnativi, **CBF** si riserva di apportare modifiche senza preavviso.
The specifications are not binding, **CBF** reserves the right to introduce modifications without notice.